

# Report from OVPR on annual sponsored programs activity

Awards - Federal/Non-Federal															
Sponsor Type	FY 2007			2008			2009			2010			2011		
	Obligated	Count	Average	Obligated	Count	Average	Obligated	Count	Average	Obligated	Count	Average	Obligated	Count	Average
<b>Federal</b>	<b>\$121,879,396</b>	<b>462</b>	<b>\$263,808</b>	<b>\$120,165,762</b>	<b>476</b>	<b>\$252,449</b>	<b>\$138,965,286</b>	<b>525</b>	<b>\$264,696</b>	<b>\$143,642,742</b>	<b>517</b>	<b>\$277,839</b>	<b>\$142,322,259</b>	<b>495</b>	<b>\$287,520</b>
NIH	\$91,529,458	294	\$311,325	\$89,268,706	293	\$304,671	\$94,772,928	337	\$281,225	\$99,633,847	330	\$301,921	\$101,044,397	318	\$317,750
NSF	\$7,388,967	58	\$127,396	\$7,681,832	55	\$139,670	\$11,925,875	59	\$202,133	\$9,835,341	64	\$153,677	\$12,388,334	56	\$221,220
US DEFENSE DEPARTMENT	\$6,682,463	26	\$257,018	\$4,310,461	30	\$143,682	\$8,093,424	35	\$231,241	\$8,322,424	31	\$268,465	\$9,378,302	35	\$267,951
HHS	\$8,875,492	45	\$197,233	\$8,482,672	41	\$206,894	\$6,778,532	41	\$165,330	\$6,518,004	36	\$181,056	\$6,805,459	32	\$212,671
US DEPARTMENT OF EDUCATION	\$3,605,649	15	\$240,377	\$4,491,549	18	\$249,531	\$4,128,953	14	\$294,925	\$11,549,545	15	\$769,970	\$3,213,351	11	\$292,123
US DEPARTMENT OF ENERGY	\$1,746,172	7	\$249,453	\$3,550,512	11	\$322,774	\$10,211,295	12	\$850,941	\$5,573,795	11	\$506,709	\$2,987,792	12	\$248,983
US DEPARTMENT OF JUSTICE				\$824,984	4	\$206,246	\$187,800	1	\$187,800	\$151,974	3	\$50,658	\$1,817,056	5	\$363,411
US INDEPENDENT AGENCIES				\$253,839	10	\$25,384	\$426,050	4	\$106,513	\$308,674	2	\$154,337	\$1,434,810	5	\$286,962
US DEPARTMENT OF VETERANS AFFAIRS	\$98,246	3	\$32,749	\$96,477	2	\$48,239	\$275,799	8	\$34,475	\$483,551	15	\$32,237	\$1,287,442	13	\$99,034
OTHER FEDERAL	\$513,013	2	\$256,507	\$372,614	1	\$372,614	\$1,013,532	4	\$253,383	\$240,015	2	\$120,008	\$1,070,310	1	\$1,070,310
US DEPARTMENT OF TRANSPORTATION	\$1,261,936	7	\$180,277	\$423,016	7	\$60,431	\$773,631	7	\$110,519	\$300,572	3	\$100,191	\$377,876	2	\$188,938
US DEPARTMENT OF INTERIOR	\$3,000	1	\$3,000							\$169,001	2	\$84,501	\$234,434	2	\$117,217
US AGRICULTURE DEPARTMENT	\$15,000	1	\$15,000				\$130,391	2	\$65,196	\$506,000	2	\$253,000	\$137,163	1	\$137,163
US HUD	\$160,000	3	\$53,333	\$101,652	2	\$50,826				\$50,000	1	\$50,000	\$125,271	1	\$125,271
US DEPARTMENT OF COMMERCE				\$32,256	1	\$32,256							\$20,263	1	\$20,263
US DEPARTMENT OF STATE				\$275,192	1	\$275,192	\$247,076	1	\$247,076						
<b>Non-Federal</b>	<b>\$47,913,578</b>	<b>643</b>	<b>\$74,516</b>	<b>\$44,141,567</b>	<b>612</b>	<b>\$72,127</b>	<b>\$35,971,603</b>	<b>554</b>	<b>\$64,931</b>	<b>\$38,650,469</b>	<b>565</b>	<b>\$68,408</b>	<b>\$44,917,627</b>	<b>614</b>	<b>\$73,156</b>
CORPORATIONS (FOR-PROFIT)	\$12,935,514	304	\$42,551	\$9,345,427	293	\$31,896	\$6,268,947	244	\$25,692	\$9,509,437	197	\$48,271	\$9,570,164	215	\$44,512
STATE GOVERNMENT (WITHIN MICHIGAN)	\$8,787,116	64	\$137,299	\$4,500,651	48	\$93,764	\$5,935,392	49	\$121,130	\$5,483,275	41	\$133,738	\$7,297,487	69	\$105,761
HIGHER EDUCATION INSTITUTIONS	\$192,960	11	\$17,542	\$964,389	14	\$68,885	\$1,134,413	17	\$66,730	\$3,711,111	38	\$97,661	\$6,123,438	62	\$98,765
FOUNDATIONS	\$3,251,816	53	\$61,355	\$4,434,172	57	\$77,792	\$6,486,263	53	\$122,382	\$4,530,962	70	\$64,728	\$5,456,621	68	\$80,244
HOSPITALS AND HEALTH CARE, WSU-DMC AFFILIATES	\$1,780,827	31	\$57,446	\$1,576,493	31	\$50,855	\$3,587,241	36	\$99,646	\$2,481,852	41	\$60,533	\$3,315,915	43	\$77,114
ASSOCIATIONS	\$4,759,256	65	\$73,219	\$5,225,463	67	\$77,992	\$4,933,255	59	\$83,614	\$4,231,435	56	\$75,561	\$3,147,818	43	\$73,205
LOCAL GOVERNMENT (WITHIN MICHIGAN)	\$10,002,076	23	\$434,873	\$13,195,665	14	\$942,548	\$3,791,456	21	\$180,546	\$2,717,494	19	\$143,026	\$2,525,400	18	\$140,300
FOREIGN FOR-PROFIT	\$945,487	14	\$67,535	\$740,879	17	\$43,581	\$525,821	15	\$35,055	\$1,059,419	12	\$88,285	\$2,095,144	11	\$190,468
HOSPITALS AND HEALTH CARE	\$633,241	11	\$57,567	\$881,631	11	\$80,148	\$777,808	14	\$55,558	\$1,322,819	16	\$82,676	\$1,775,734	24	\$73,989
OTHER NON-PROFITS	\$1,790,065	38	\$47,107	\$1,762,613	37	\$47,638	\$1,455,233	32	\$45,476	\$1,450,383	39	\$37,189	\$1,367,155	27	\$50,635
CORPORATIONS (NON-PROFIT)	\$2,450,804	21	\$116,705	\$1,046,075	14	\$74,720	\$659,859	8	\$82,482	\$1,315,574	19	\$69,241	\$818,450	17	\$48,144
OTHER FOR-PROFIT	\$4,318	1	\$4,318	\$31,950	2	\$15,975	\$16,159	3	\$5,386	\$340,080	6	\$56,680	\$644,524	12	\$53,710
FOREIGN GOVERNMENT	\$75,866	1	\$75,866	\$118,477	1	\$118,477	\$155,748	1	\$155,748	\$339,389	5	\$67,878	\$464,598	3	\$154,866
OTHER GOVERNMENT IN US (OUTSIDE OF MICHIGAN)													\$315,179	2	\$157,590
FOREIGN NON-PROFITS	\$304,232	6	\$50,705	\$280,720	5	\$56,144	\$244,010	2	\$122,005	\$157,239	6	\$26,206			
OTHER GOVERNMENT OUTSIDE US				\$36,962	1	\$36,962									
<b>Grand Total</b>	<b>\$169,792,973</b>	<b>1105</b>	<b>\$153,659</b>	<b>\$164,307,329</b>	<b>1088</b>	<b>\$151,018</b>	<b>\$174,936,889</b>	<b>1079</b>	<b>\$162,129</b>	<b>\$182,293,211</b>	<b>1082</b>	<b>\$168,478</b>	<b>\$187,239,887</b>	<b>1109</b>	<b>\$168,837</b>

This type of report is not very helpful. The fundamental question--are we improving as a research institution compared with our peers?--is not answered.

## Specific questions that should be answered:

- ◆ What is the amount of investigator-initiated funding from government agencies?
- ◆ Are these amounts increasing or decreasing over time?
- ◆ How do we compare with other research institutions in Michigan?
- ◆ If we are losing ground, what is the reason and can we reverse this trend?

## 10-year comparison of NIH Research Grant Funding\*

Year	Number of WSU grants	NIH Research Grants		
		WSU	UM	MSU
2002	278	\$69,575,058	\$339,113,597	\$30,679,824
2003	258	\$71,843,310	\$331,546,366	\$33,377,058
2004	253	\$69,140,846	\$328,512,828	\$33,721,830
2005	238	\$68,538,612	\$352,924,313	\$39,060,625
2006	222	\$63,083,918	\$365,857,956	\$35,226,063
2007	217	\$62,401,011	\$378,302,379	\$33,085,176
2008	204	\$60,839,630	\$405,287,188	\$33,619,724
2009	180	\$54,910,753	\$430,830,318	\$32,538,860
2010	181	\$56,846,273	\$447,787,790	\$43,242,429
2011	200	\$64,112,915	\$438,162,497	\$48,391,796
2002-2011	-28.1%	-7.9%	29.2%	57.7%

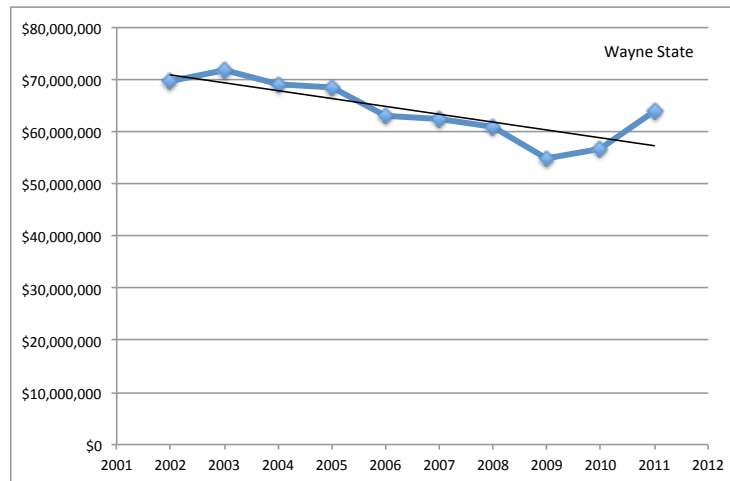
These numbers are not inflation adjusted and if they were WSU would be down 26% (2011 funding at \$51,275,743 in 2002 dollars).

Data from NIH web site:

<http://report.nih.gov/award/organizations.cfm?ot=DH&fy=2011&state=MI&ic=&fm=RG&orgid=9110501&view=orgdetail>

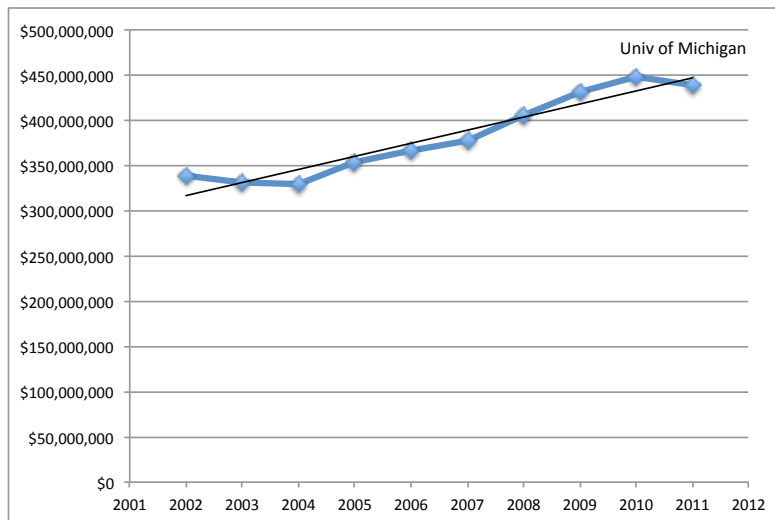
\*Research Grant category basically includes "R01 type grants," center grants, and program projects.

# Comparison of NIH Research Grant Funding\* (WSU, UM, MSU)

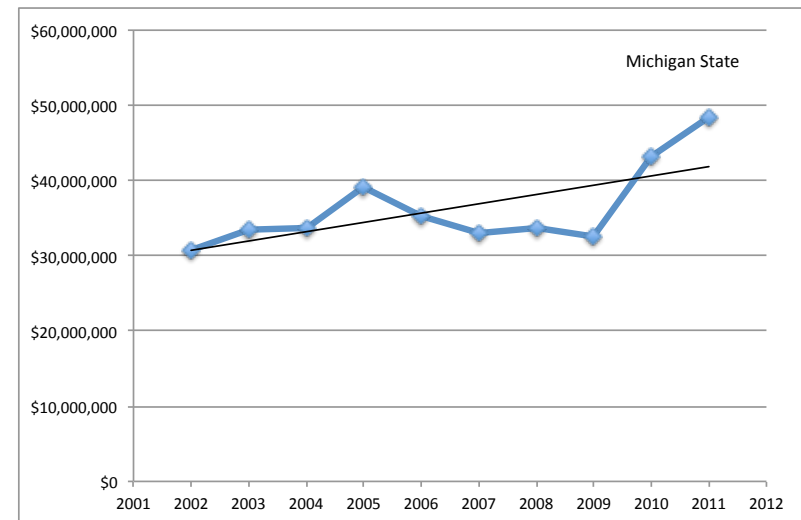


WSU

UM



MSU



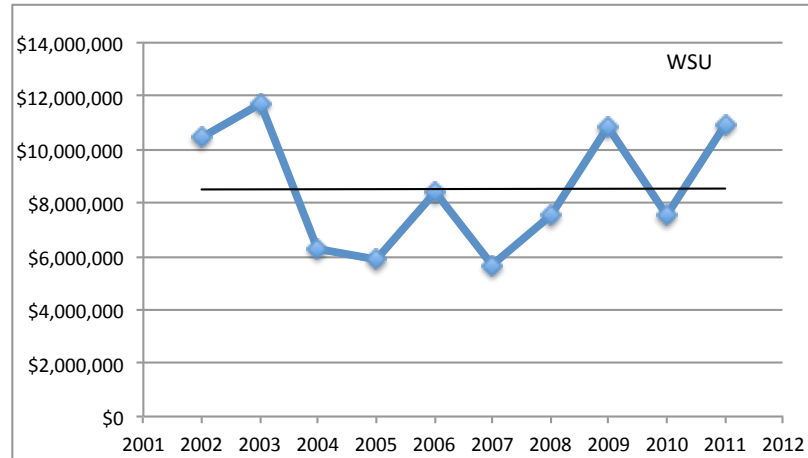
\*Research Grant category basically includes "R01 type grants," center grants, and program projects. Trendlines are least squares fit to each analysis.

## Comparison of NSF funding

Year	Total NSF Support		
	WSU	UM	MSU
2002	\$10,421,000	\$60,054,000	\$40,199,000
2003	\$11,679,000	\$73,273,000	\$62,760,000
2004	\$6,293,000	\$67,230,000	\$46,749,000
2005	\$5,897,000	\$70,678,000	\$61,227,000
2006	\$8,394,000	\$68,662,000	\$52,481,000
2007	\$5,674,000	\$61,864,000	\$62,203,000
2008	\$7,503,000	\$68,549,000	\$53,975,000
2009	\$10,872,000	\$116,706,000	\$78,706,000
2010	\$7,535,000	\$80,963,000	\$62,696,000
2011	\$10,934,000	\$85,166,000	\$71,100,000
2002-2011	4.9%	41.8%	76.9%

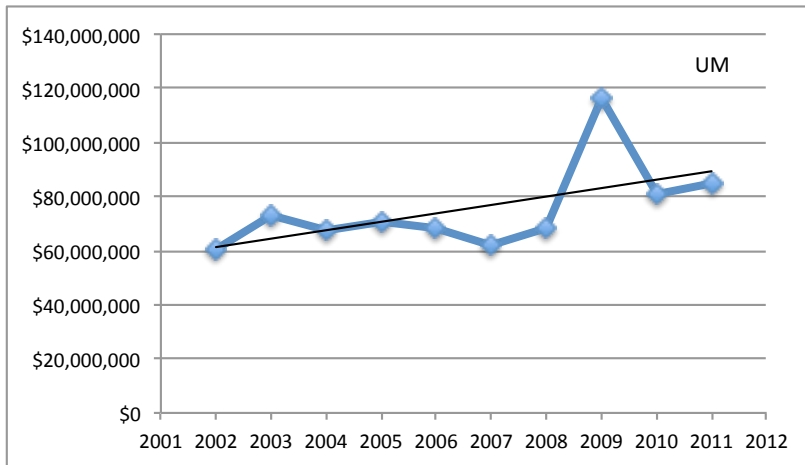
Data from NSF web site: <http://dellweb.bfa.nsf.gov/AwdLst2/default.asp>

# Comparison of NSF funding (WSU, UM, MSU)

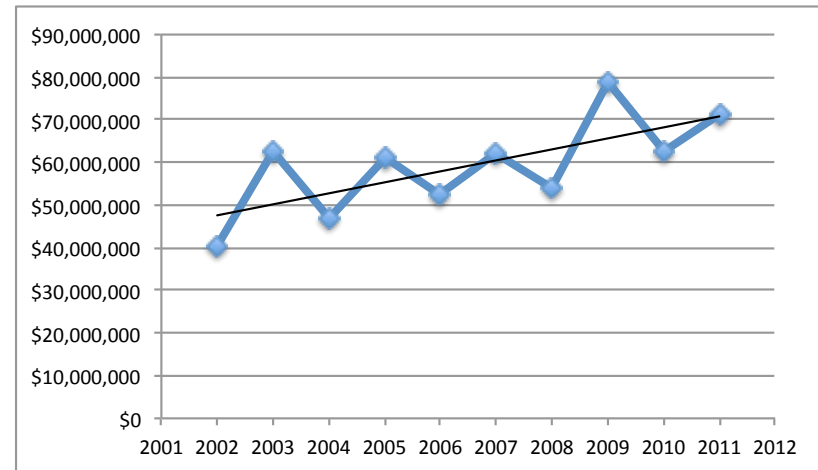


WSU

UM



MSU



Trendlines are least squares fit to each analysis.

## Suggestions for improving research funding at WSU

- ◆ Take proactive steps to keep our best faculty from leaving.
- ◆ Ensure that the highest standards are used in faculty recruiting.
- ◆ Encourage the Deans to fill all unfilled tenure track positions.
- ◆ Ensure that young faculty are properly mentored.
- ◆ Provide hands on help in grant preparation.
- ◆ Ensure that the budget of the Research Office is spent in a way that maximizes impact.