

Two Issues:

1. New policy regarding peer evaluation of teaching
2. Student retention (part 1)

1. Peer evaluation of teaching

Language in the new WSU AAUP-AFT contract (March 20, 2013):

Peer evaluation of teaching, as a complement to course evaluations, is an important aspect in the assessment of teaching. It allows for peers to evaluate their colleagues during actual teaching sessions, for the purpose of enhancing student success, as well as the professional development and teaching effectiveness of faculty. Within six (6) months of the ratification of this Agreement each unit shall determine a process for peer evaluation of teaching, including classroom observation, that best fits the style(s) of teaching (classroom, laboratory, practical, etc.) practiced by the discipline(s) represented in the unit. This process will be incorporated in the unit bylaws after approval, as specified in Article XXVII.

Administration materials provided last month

- ◆ List of typical practices
- ◆ List of practices at nine universities
- ◆ Each unit asked to determine the process
- ◆ Aim is to improve teaching and student learning
- ◆ Not to be used in merit evaluations

Policy Committee recommendations

- ◆ Units need better guidance
- ◆ Similar disciplines should have similar processes
- ◆ Make evaluations specific for Wayne State
- ◆ Suppose a unit refuses, consequences?
- ◆ Timeline—already late, let's get it right

2. Student retention (part 1)

- ◆ Why should we care?
- ◆ How are we doing?
- ◆ How do we compare?
- ◆ How can we do better?

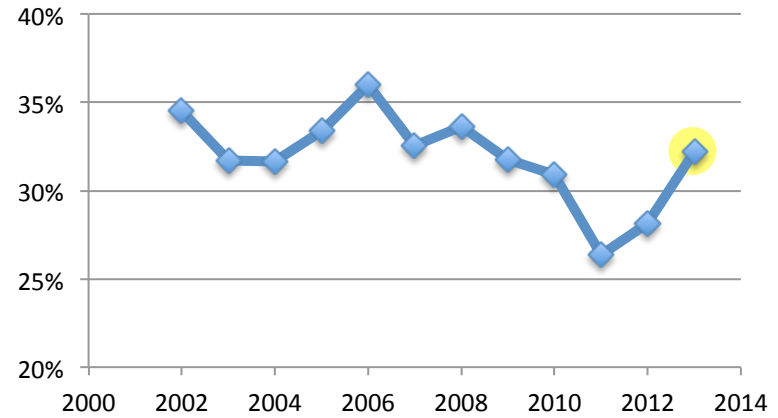
Student retention affects:

- ◆ Budget—tuition revenues
- ◆ Budget—state appropriations
- ◆ University reputation
- ◆ Undergraduate recruitment
- ◆ Students' lives

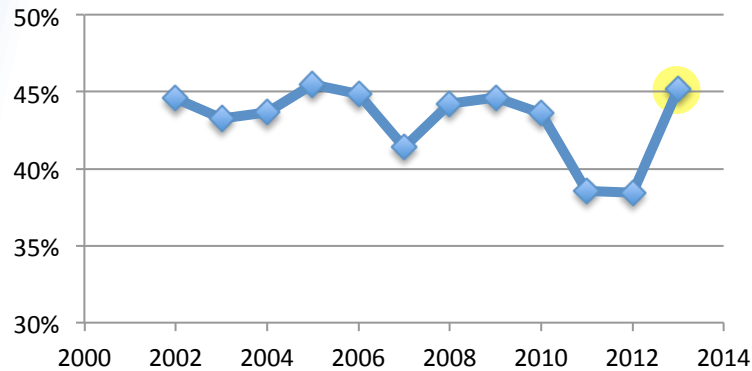
Retention numbers, 2002-13

	All	White	Black
2002	34.5%	44.6%	13.9%
2003	31.7%	43.3%	13.0%
2004	31.7%	43.7%	10.0%
2005	33.4%	45.5%	11.2%
2006	36.0%	44.9%	10.1%
2007	32.5%	41.4%	9.8%
2008	33.6%	44.2%	8.7%
2009	31.8%	44.6%	8.6%
2010	30.9%	43.6%	10.0%
2011	26.4%	38.6%	7.5%
2012	28.1%	38.4%	9.2%
2013	32.2%	45.2%	11.1%

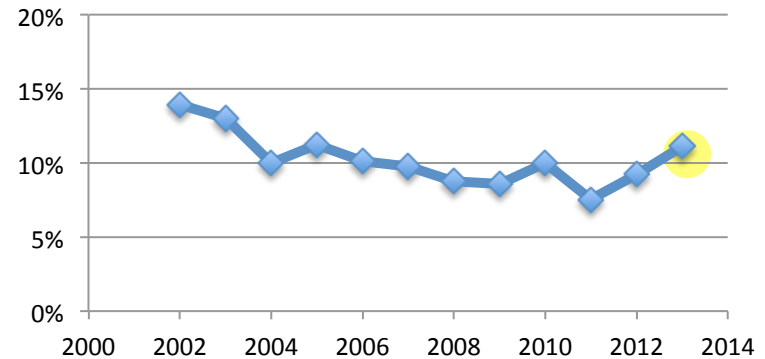
Six year graduation (All)



Six year graduation (White)



Six year graduation (Black)



Source: Provost's report (2012) and STARS

How do we compare with our peer institutions?

Peer institution should have similar:

- ◆ Student population: diverse, older, part-time
- ◆ Mission: opportunity, urban
- ◆ Research: very high

How do we compare with our peer institutions?

Wayne State University Peer List (Institutional research website)

*Indiana University - Purdue University - Indianapolis (Indianapolis, IN)

Michigan State University (East Lansing, MI)

Temple University (Philadelphia, PA)

University at Buffalo (Buffalo, NY)

*University of Alabama at Birmingham (Birmingham, AL)

University of Cincinnati - Main Campus (Cincinnati, OH)

University of Colorado Denver (Denver, CO)

*University of Houston (Houston, TX)

University of Illinois at Chicago (Chicago, IL)

*University of Louisville (Louisville, KY)

University of Minnesota - Twin Cities (Minneapolis, MN)

*University of New Mexico - Main Campus (Albuquerque, NM)

University of Pittsburgh - Pittsburgh Campus (Pittsburgh, PA)

University of Utah (Salt Lake City, UT)

*Virginia Commonwealth University (Richmond, VA)

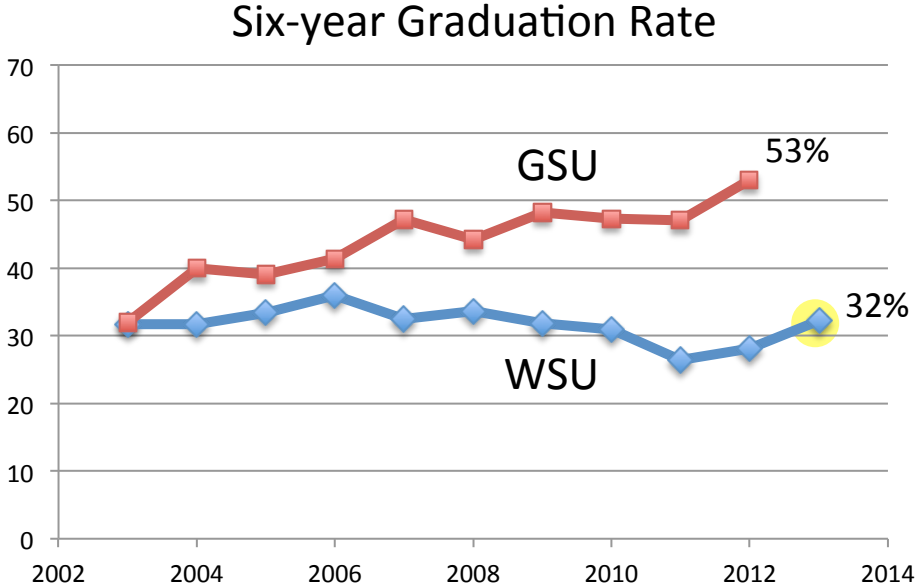
Comparison with Georgia State University

Characteristic	WSU	GSU
Sector	Public	Public
Research classification	very high	very high
Undergraduates	20,837	23,483
Avg GPA	3.2	3.4
Median ACT	21	23
ACT 25-75% median	17-24	21-25
Percent admitted	86	52
Tuition	\$9,809	\$9,410
Pell	58	51
Black	29	35
White	49	37
25 and over	31	24
Part-time	35	25

(2011 data)

Source: College results online

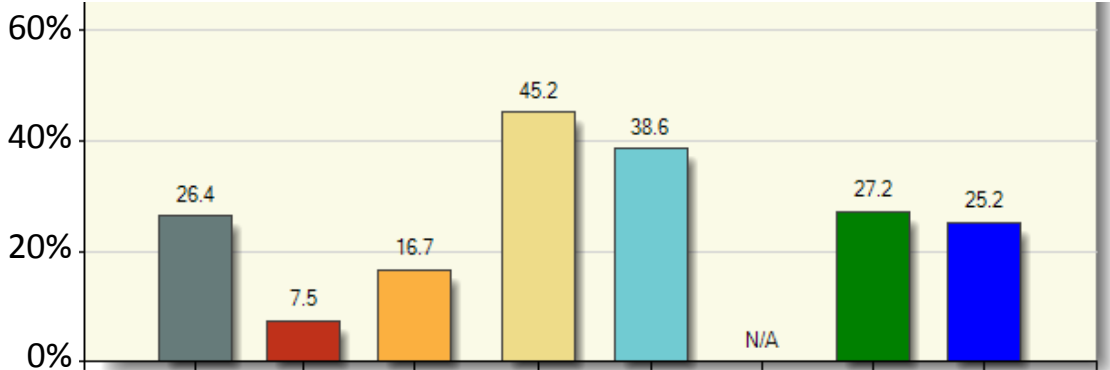
Georgia State vs. Wayne State



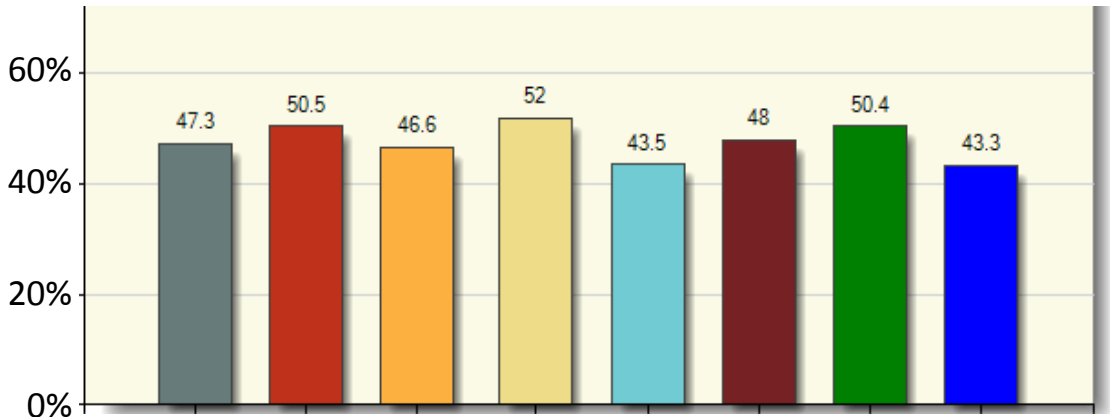
Source: GSU website and WSU Provost's report, STARS

Georgia State vs. Wayne State

WSU



GSU



(2011 data)

Source: College Results Online

What is Georgia State doing?

- ◆ Mandatory Freshman advising
- ◆ Must declare major after Freshman year
- ◆ Early alert for Freshman
- ◆ Academic coaching
- ◆ Introductory course
- ◆ Freshman learning communities
- ◆ Success academy
- ◆ First year book

Faculty involvement

WSU Chemistry

Regina Zibuck, Senior Lecturer
Director of Undergraduate Studies

Jeremy Kodanko, Assoc. Professor
Honors and Undergraduate Research

Erin Bachert, Academic Services Officer
Undergraduate Advisor

GSU Chemistry

Joan Comar, Senior Lecturer
Co-Director of Undergraduate Studies

Jeremiah Harden, Lecturer
Co-Director of Undergraduate Studies and
Senior advisor

G. Davon Kennedy, Assoc. Professor
Freshman Advisor

Keith Pascoe, Senior Lecturer
Pre-med advisor

Gigi Ray, Senior Lecturer
Honors Advisor

Marquesha Jackson, Academic Services Officer
Undergraduate Coordinator

Student retention (part 2)

CLAS presentation at December Senate meeting

Dean Wayne Raskind

Assoc. Dean Robert Aguirre

