



*Undergraduate Financial Aid:
Satisfactory Academic Progress
&
Changes in Funding Trends*



What is Satisfactory Academic Progress (SAP)?

- To qualify for (Title IV funding) need-based financial aid students must be enrolled in a degree program and make Satisfactory Academic Progress (SAP) toward that degree
 - SAP has three criteria:
 1. GPA Requirement: 2.0 for undergraduates (3.0 grads)
 2. Completion Rate (Pace): at least 67% of classes attempted must be completed with passing grades
 3. Maximum Time Frame: Students must complete a degree or certificate within 150% of the required coursework of their program (e.g. within 180 credit hours attempted for undergraduates in a 120 credit hour degree program)
 - Change for SAP is that it that students are evaluated at the end of every semester instead of once a year
-



What Happens if a Student does not meet SAP?

- Step 1: Students are placed on **Warning** status after the first semester SAP standards are not met
 - Step 2: If after the **Warning** semester the student is still not making SAP the student is denied aid – the student may appeal and if approved is placed on **Probation** and receives aid. The student must include an **Academic Action Plan (AAP)** with the appeal.
 - Step 3 Students on **Probation** must meet the requirement of the **AAP** by the end of the semester. If they do not their aid is denied. They may appeal again, but it is less likely that their appeal will be approved
-



What was SAP Impact to WSU from Fall Term?

- Total Fall 2011 undergraduate headcount enrollment: 20,590
 - Amount receiving Federal Aid: 14,486
 - Undergraduates who had less than a 2.0 GPA in fall term: 4,586
 - FTIACs with less than a 2.0 GPA in fall term: 625
 - Number of Undergraduates who have less than a 2.0 cum GPA: 2,639
 - Undergrads who were list as "unsatisfactory" (means students were already given one semester warning) for winter term: 2,294
 - Students who appealed: 756 (551 approved; 160 denied; 45 pending)
 - Students not registered for winter: 1,236
 - Students registered for winter w/o federal aid: 302
 - Students enrolled in fall that are now on warning for winter: 1,499
-



Steps in Place to Help SAP Students

- Academic Appeals communication plans
 - Distribution of student lists to departments and college
 - Early Advising
 - Additional customer services at Student Services Center
 - Tools to assist students: academic action plan, plan of work, GPA calculator, Pace calculator
-



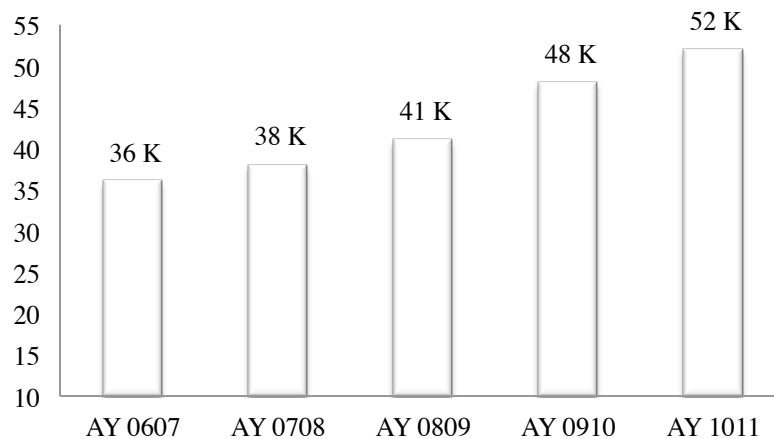
Undergraduate Financial Aid:

Changes in Funding Trends

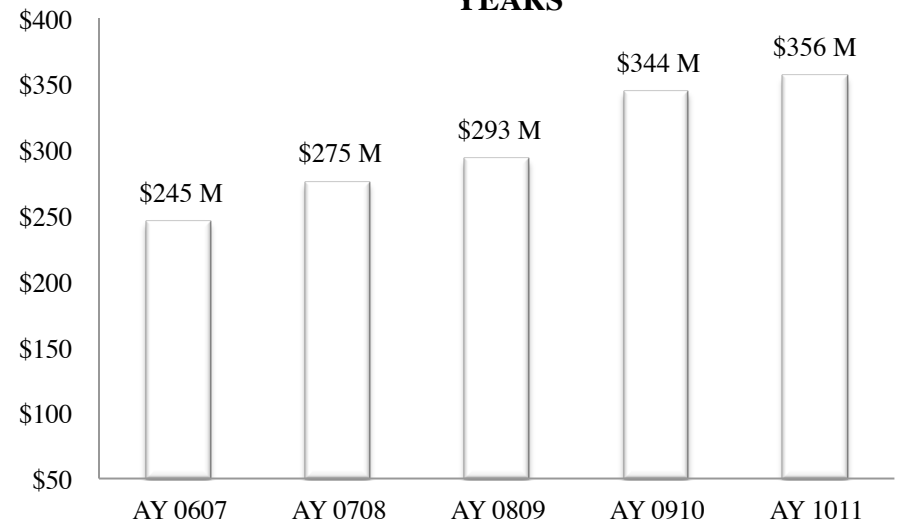


Increase in financial aid

**INCREASE IN AID APPLICATIONS OVER
LAST FIVE YEARS**



**INCREASE IN AID OVER THE LAST FIVE
YEARS**



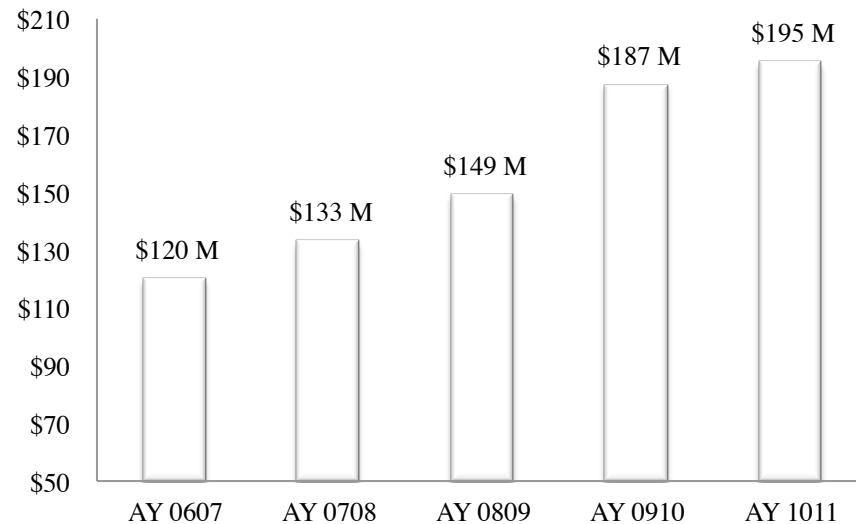
- The effect of the economy has led to a 44% increase in financial aid applications
- Financial aid has increased 45% in the last five years. 55% of this aid went to undergrads



Increase in Undergraduate Aid

- Financial aid to undergraduates increased 62.5% over the last five years.
- 84% of undergraduates receive some type of aid.

UNDERGRADUATE FINANCIAL AID PAID BY ACADEMIC YEAR

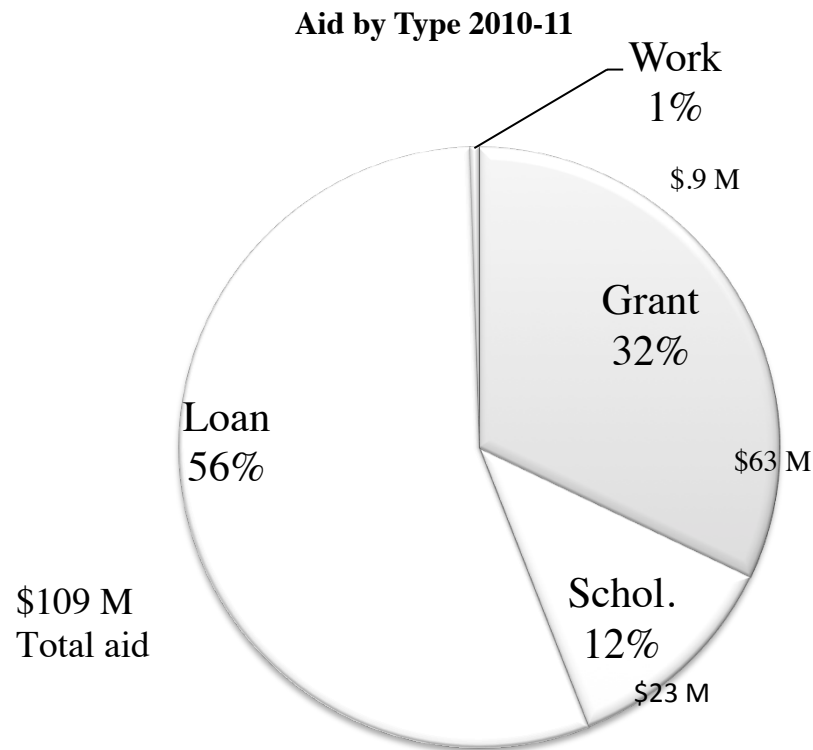




Types of Financial Aid

Four Types of Aid

Grants - Scholarships - Loans - Work-Study

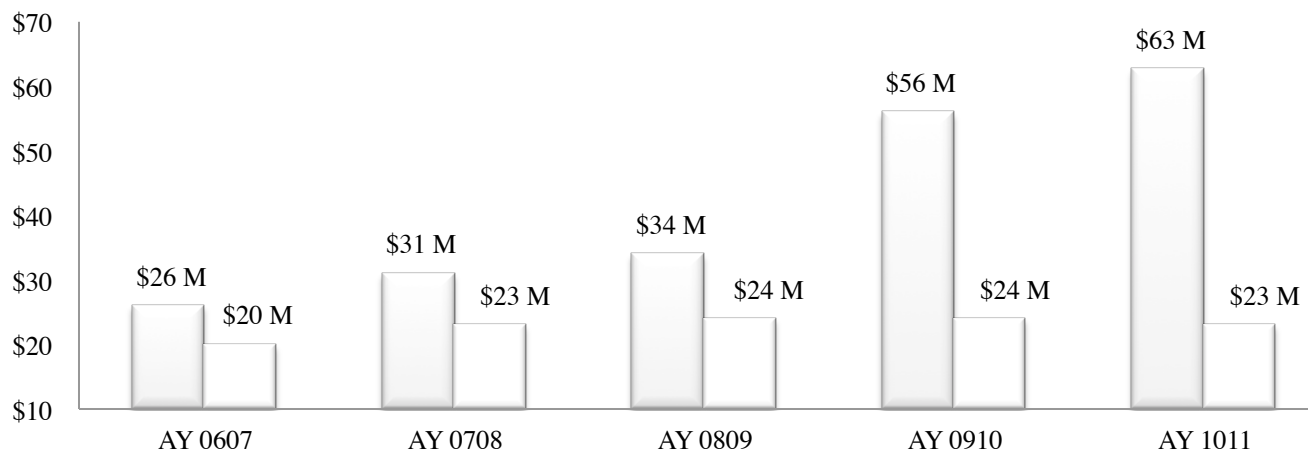




Increases in Gift Aid

- Large increases in Pell Grants and BOG awards have increased need-based funding 142%
- Increased institutional merit awards have been offset by State and Federal merit aid decreases

**FIVE YEAR DISTRIBUTION OF MERIT AND NEED BASED GRANTS/
SCHOLARSHIPS**

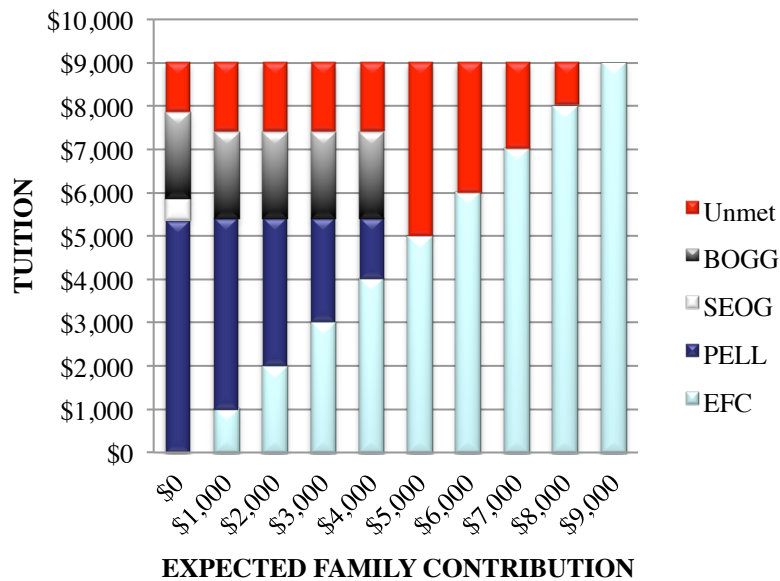




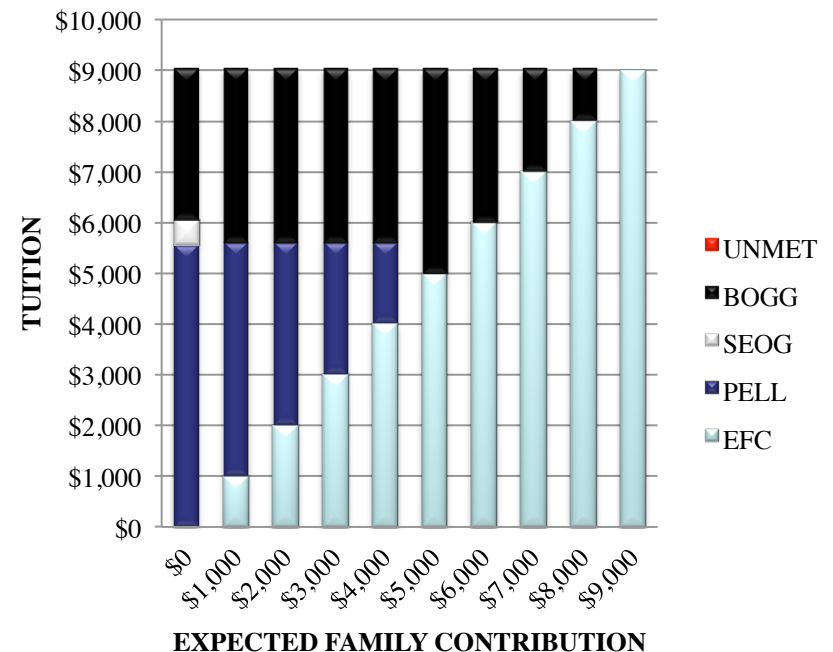
Equity Packaging Model

The equity packaging model for need based aid provides sufficient funding for tuition and fees without loans

PRIOR TO EQUITY: DISTRIBUTION OF NEED BASED GRANTS BY EFC LEVEL



AFTER EQUITY: DISTRIBUTION OF NEED BASED GRANTS BY EFC LEVEL



EFC RANGE	0	1000	2000	3000	4000	5000	6000	7000	8000	9000
# STUDENTS	4281	625	470	392	345	287	345	330	226	63



Debt Burden

- Wayne State undergraduates who borrow average **\$20,250** in cumulative debt
 - State average is \$25,675
 - National average is \$25,250
 - Borrowing in some schools/colleges is more than in others. Need to consider projected earnings after graduation
-



Other Financial Aid Issues

- Changes in Pell timeframe
 - Debt to degree measure \$28,000
 - Debt prior to enrollment causes students to reach loan maximums before graduating
 - Taking longer than 6 years to graduate also causes students to reach loan maximums
 - Moving to 3 year default rate calculation
 - Interest rates increasing from 3.4% to 6.8%
 - Loan subsidies gone for grad students 7/1/12
 - Appropriations Act signed 12/23/12
 - No loans for international students
-



Questions / Discussion
