

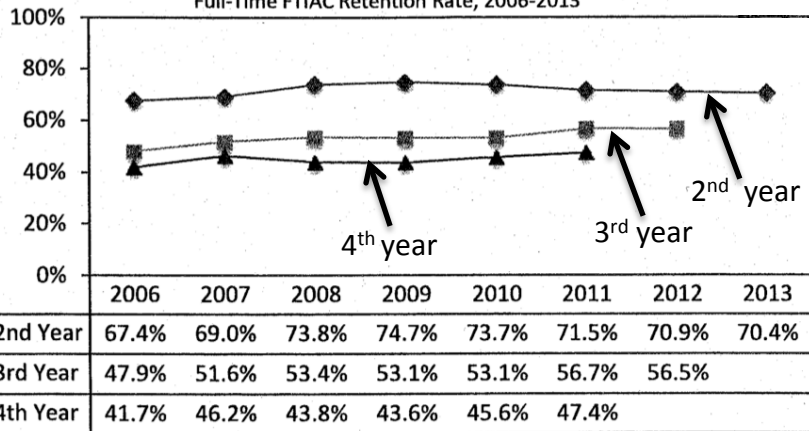


Retention Presentation
November 5, 2014

Retention 2006-2013, ACT cohorts

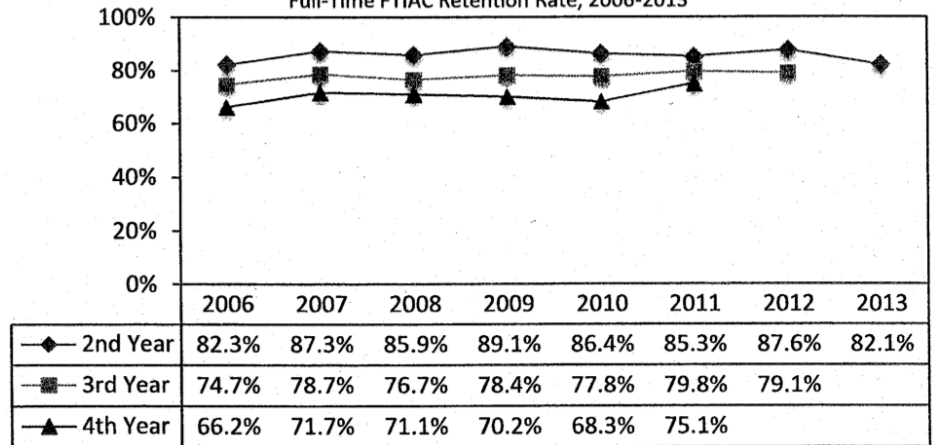
ACT 16-20

Full-Time FTIAC Retention Rate, 2006-2013



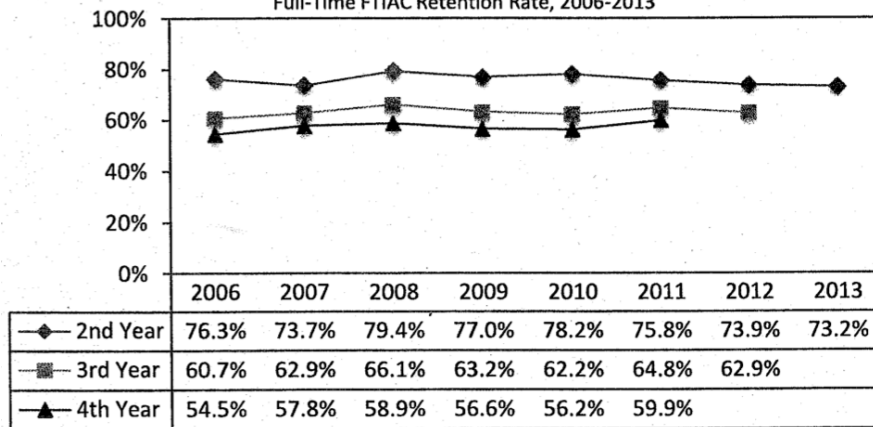
ACT 25-29

Full-Time FTIAC Retention Rate, 2006-2013



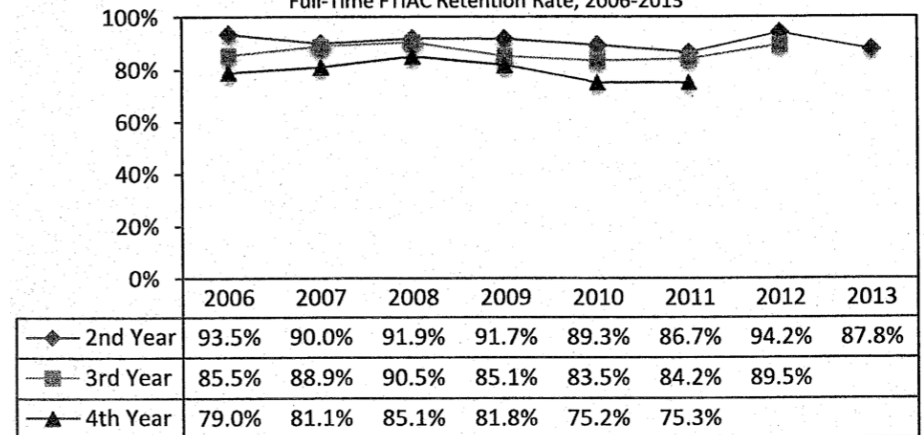
ACT 21-24

Full-Time FTIAC Retention Rate, 2006-2013



ACT 30 and above

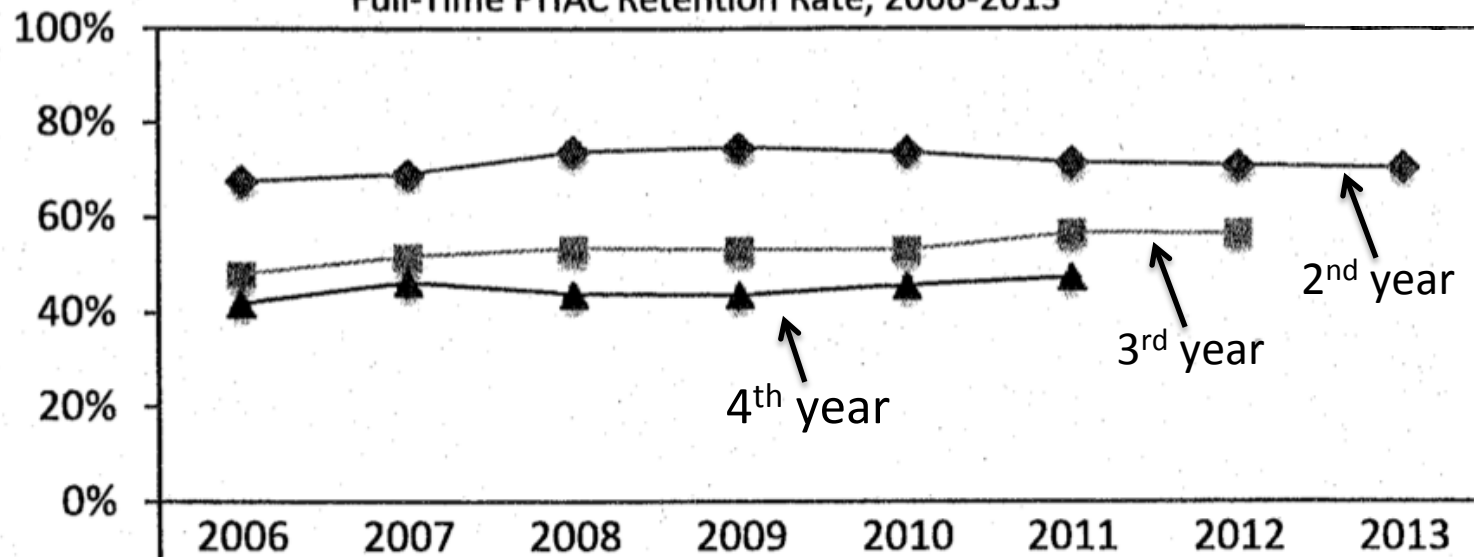
Full-Time FTIAC Retention Rate, 2006-2013



Retention 2006-2013, ACT cohorts

ACT 16-20

Full-Time FTIAC Retention Rate, 2006-2013

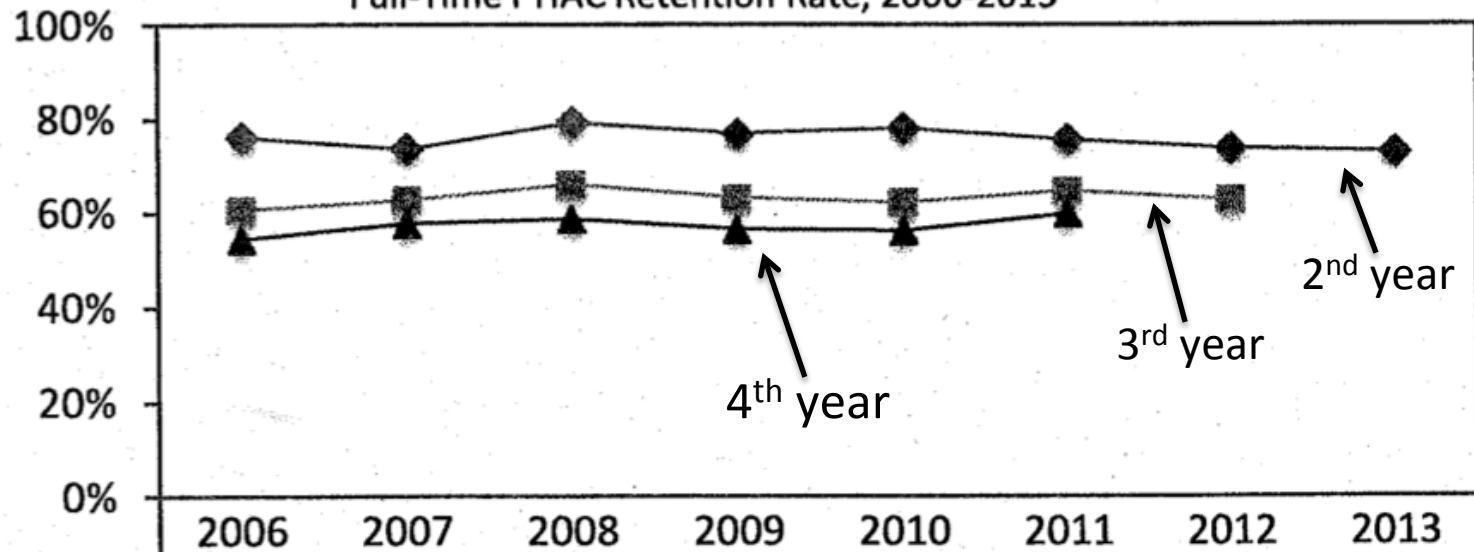


—◆— 2nd Year	67.4%	69.0%	73.8%	74.7%	73.7%	71.5%	70.9%	70.4%
—■— 3rd Year	47.9%	51.6%	53.4%	53.1%	53.1%	56.7%	56.5%	
—▲— 4th Year	41.7%	46.2%	43.8%	43.6%	45.6%	47.4%		

Retention 2006-2013, ACT cohorts

ACT 21-24

Full-Time FTIAC Retention Rate, 2006-2013

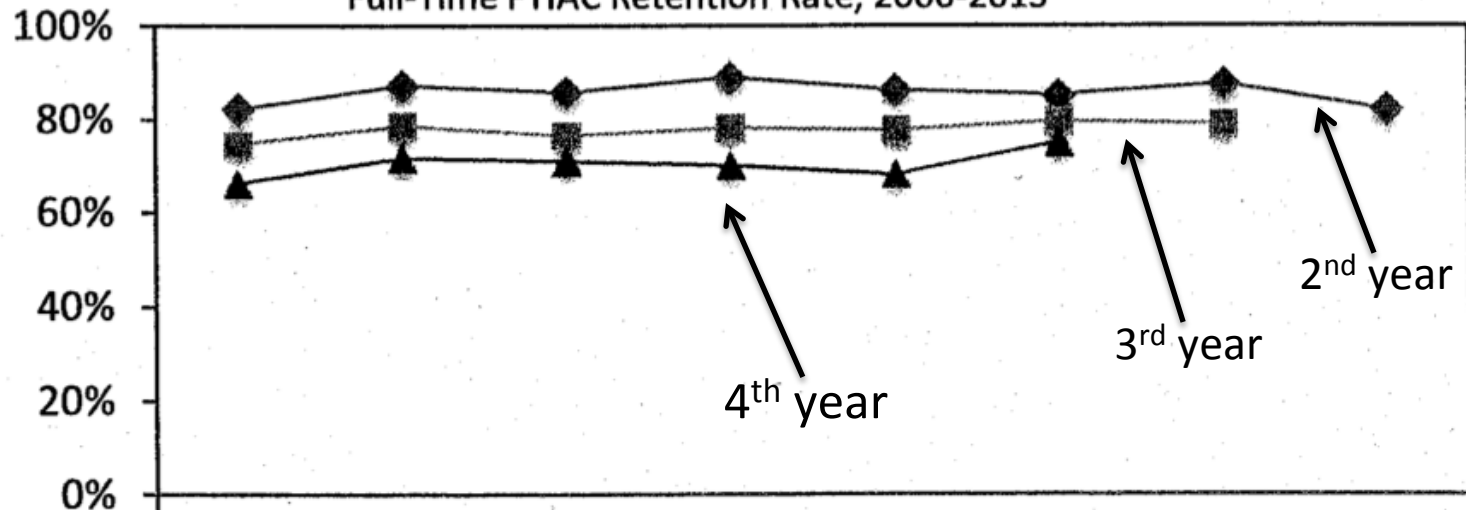


—◆— 2nd Year	76.3%	73.7%	79.4%	77.0%	78.2%	75.8%	73.9%	73.2%
—■— 3rd Year	60.7%	62.9%	66.1%	63.2%	62.2%	64.8%	62.9%	
—▲— 4th Year	54.5%	57.8%	58.9%	56.6%	56.2%	59.9%		

Retention 2006-2013, ACT cohorts

ACT 25-29

Full-Time FTIAC Retention Rate, 2006-2013

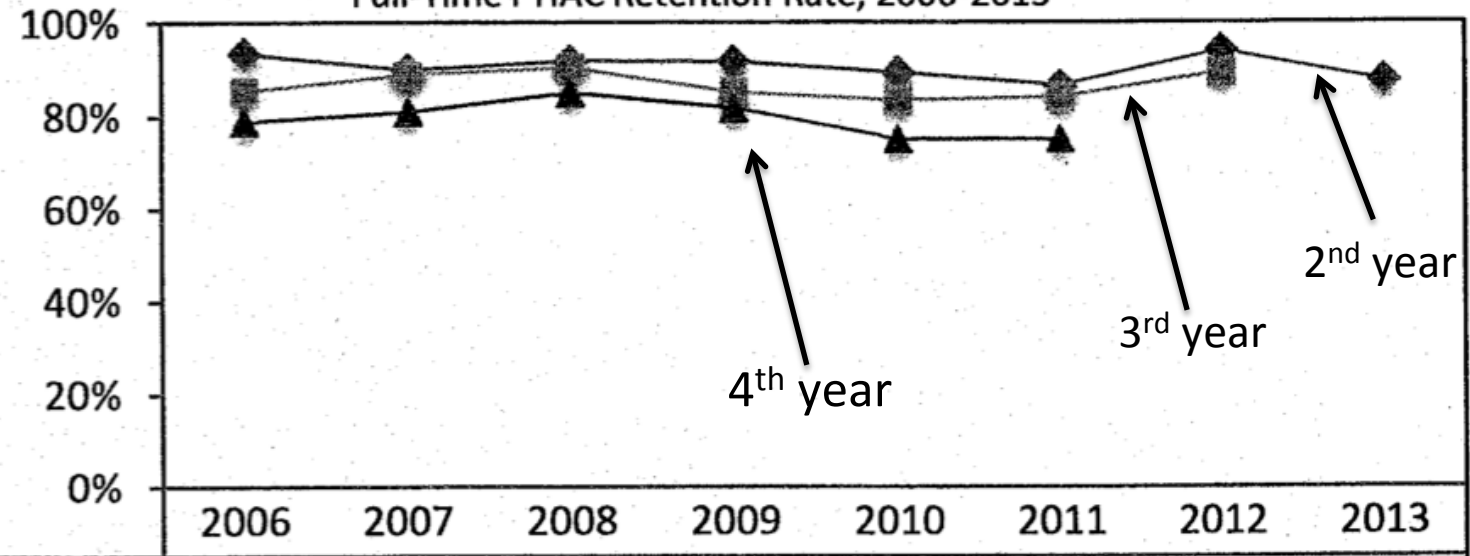


	2006	2007	2008	2009	2010	2011	2012	2013
◆ 2nd Year	82.3%	87.3%	85.9%	89.1%	86.4%	85.3%	87.6%	82.1%
■ 3rd Year	74.7%	78.7%	76.7%	78.4%	77.8%	79.8%	79.1%	
▲ 4th Year	66.2%	71.7%	71.1%	70.2%	68.3%	75.1%		

Retention 2006-2013, ACT cohorts

ACT 30 and above

Full-Time FTIAC Retention Rate, 2006-2013

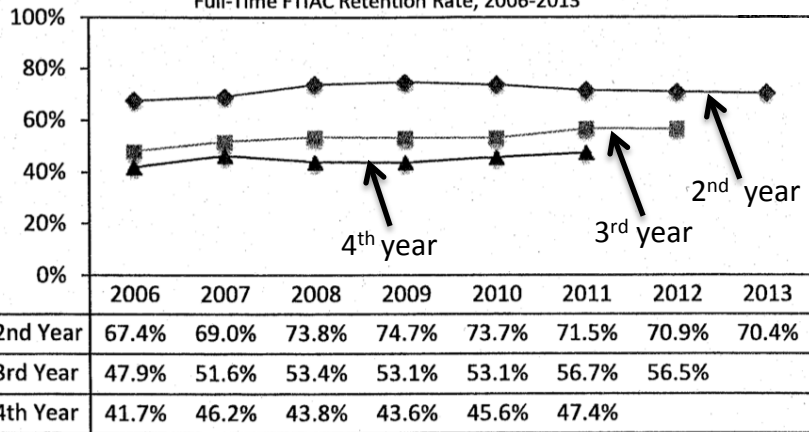


	2006	2007	2008	2009	2010	2011	2012	2013
◆ 2nd Year	93.5%	90.0%	91.9%	91.7%	89.3%	86.7%	94.2%	87.8%
■ 3rd Year	85.5%	88.9%	90.5%	85.1%	83.5%	84.2%	89.5%	
▲ 4th Year	79.0%	81.1%	85.1%	81.8%	75.2%	75.3%		

Retention 2006-2013, ACT cohorts

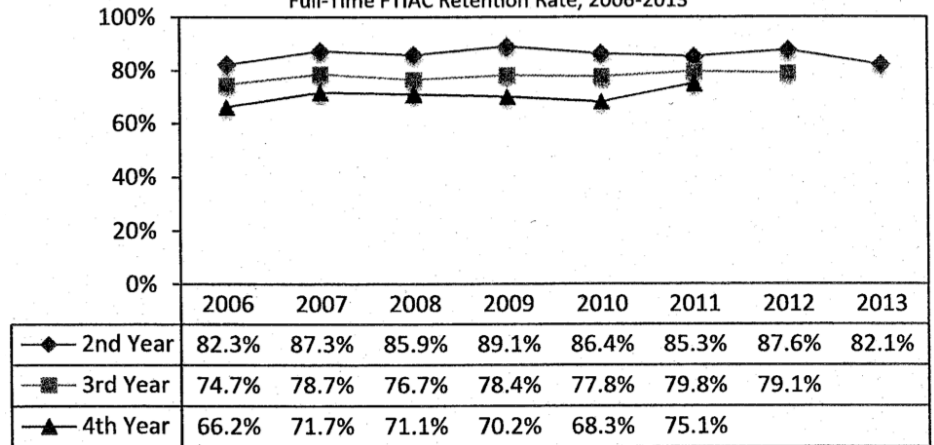
ACT 16-20

Full-Time FTIAC Retention Rate, 2006-2013



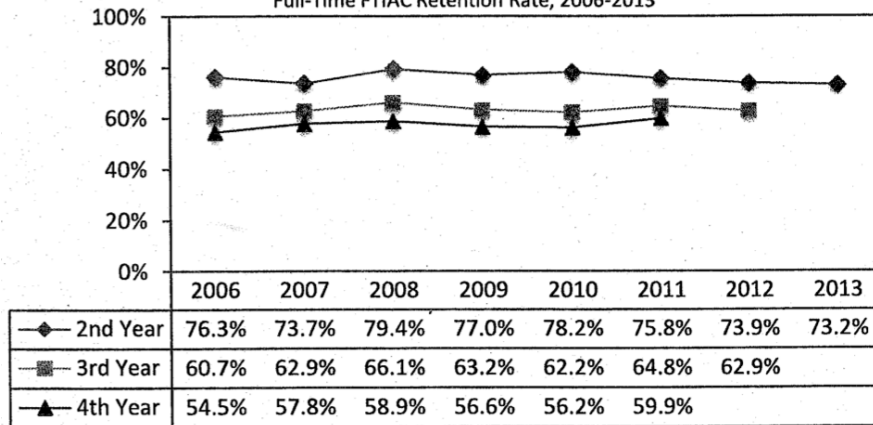
ACT 25-29

Full-Time FTIAC Retention Rate, 2006-2013



ACT 21-24

Full-Time FTIAC Retention Rate, 2006-2013



ACT 30 and above

Full-Time FTIAC Retention Rate, 2006-2013

