

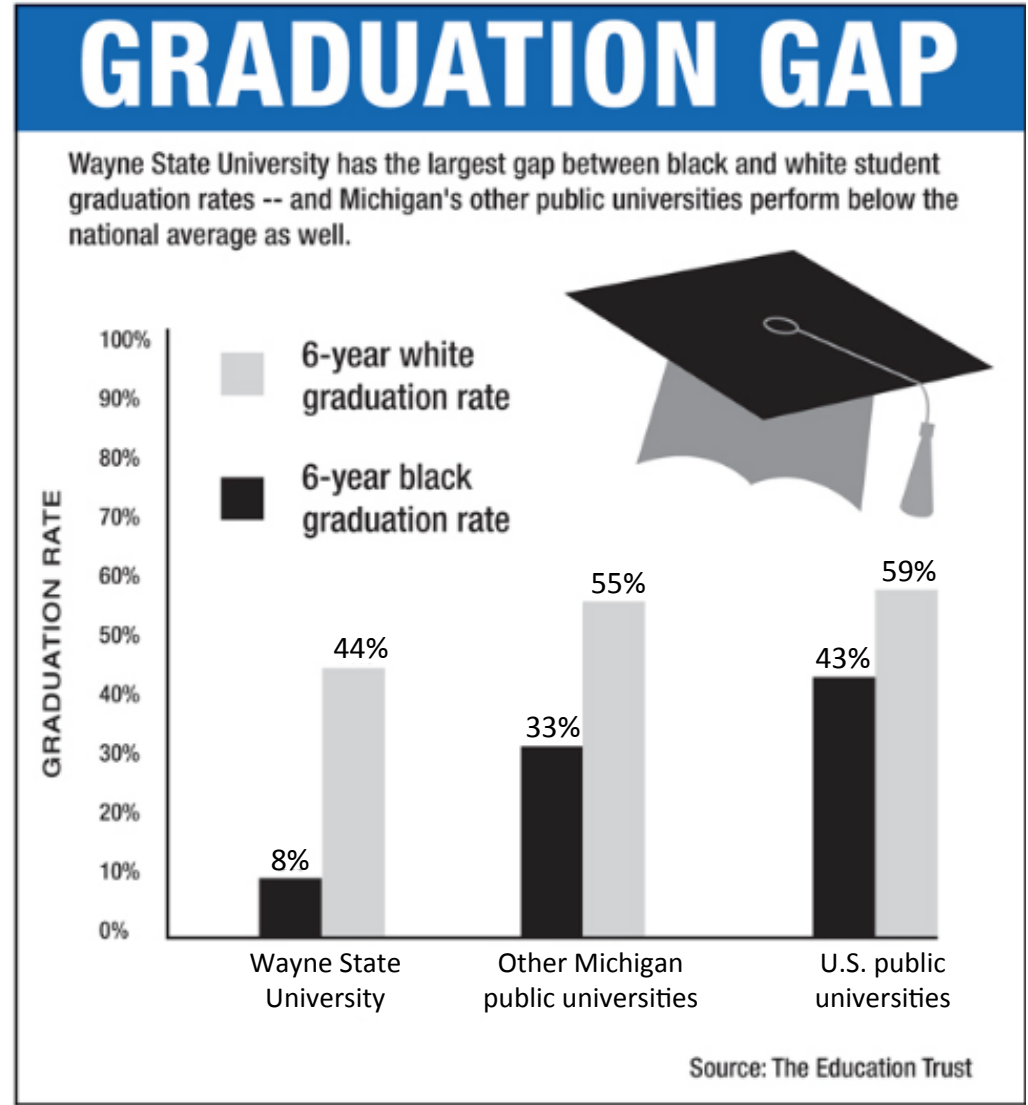


African-American Graduation Rates

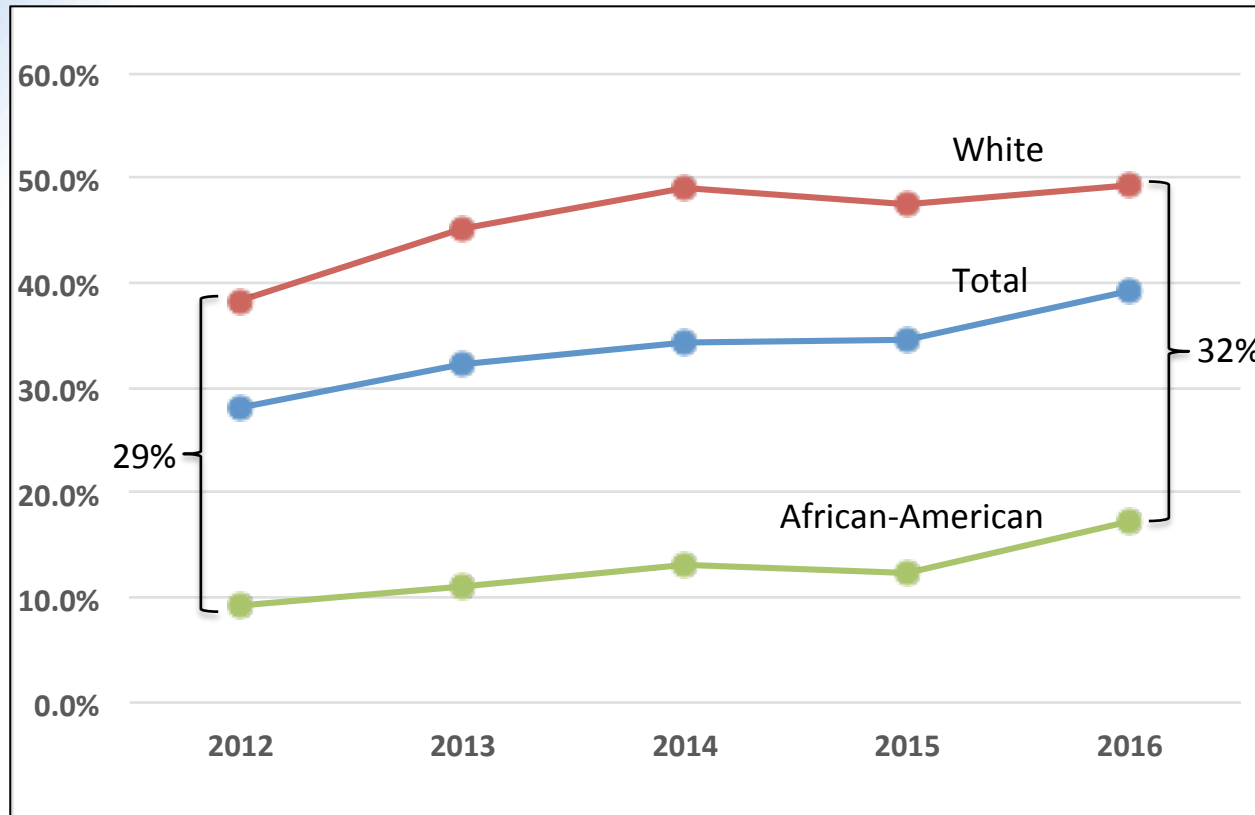
Academic Senate
November 2, 2016

Report from the Education Trust, 2010

In 2010 WSU had a 36% difference between white and black student 6-year graduation rates, the worst in the country.

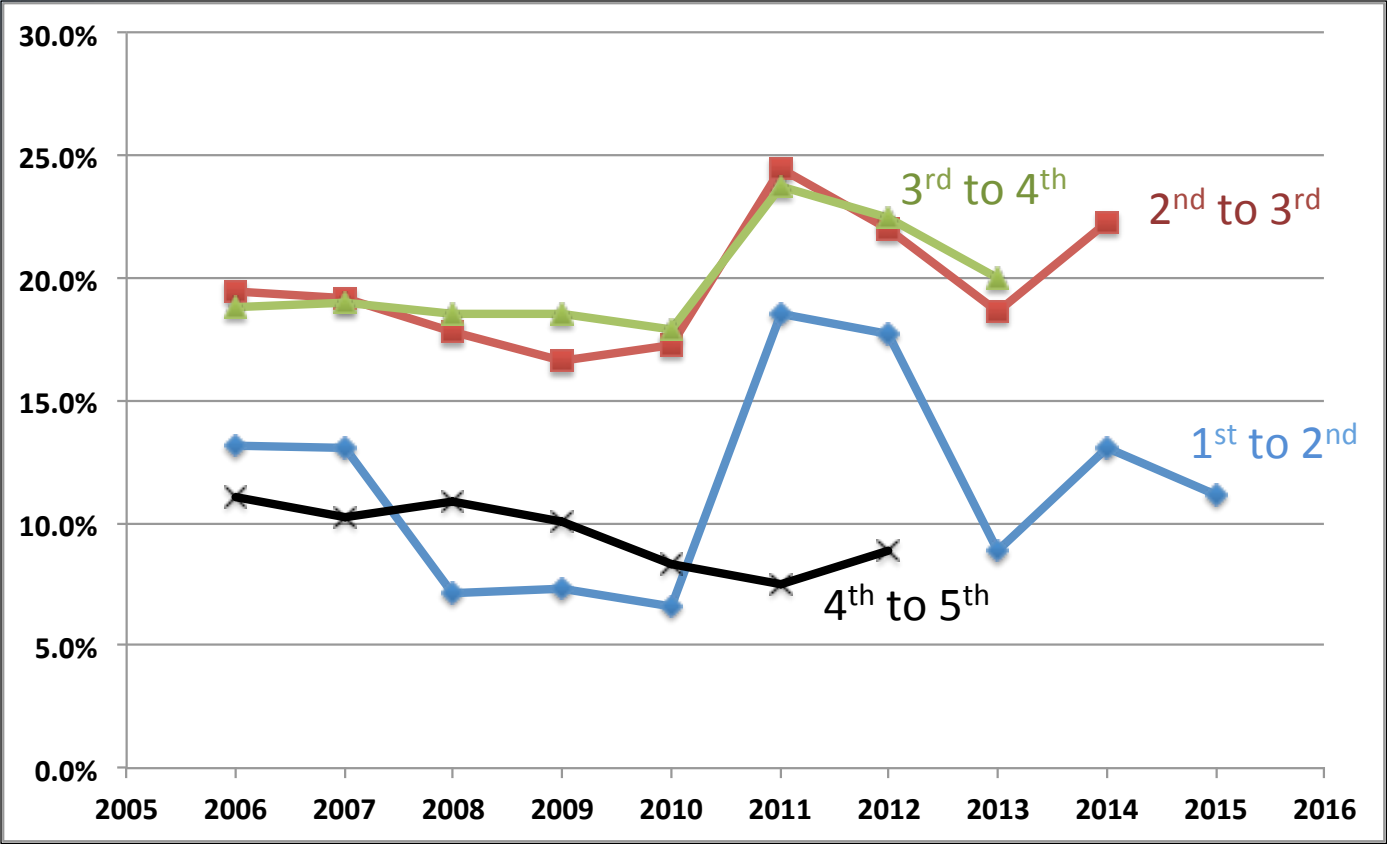


WSU six-year graduation rates -the problem continues



Differences in retention rates All vs. African-American

Difference between all and
African-American retention

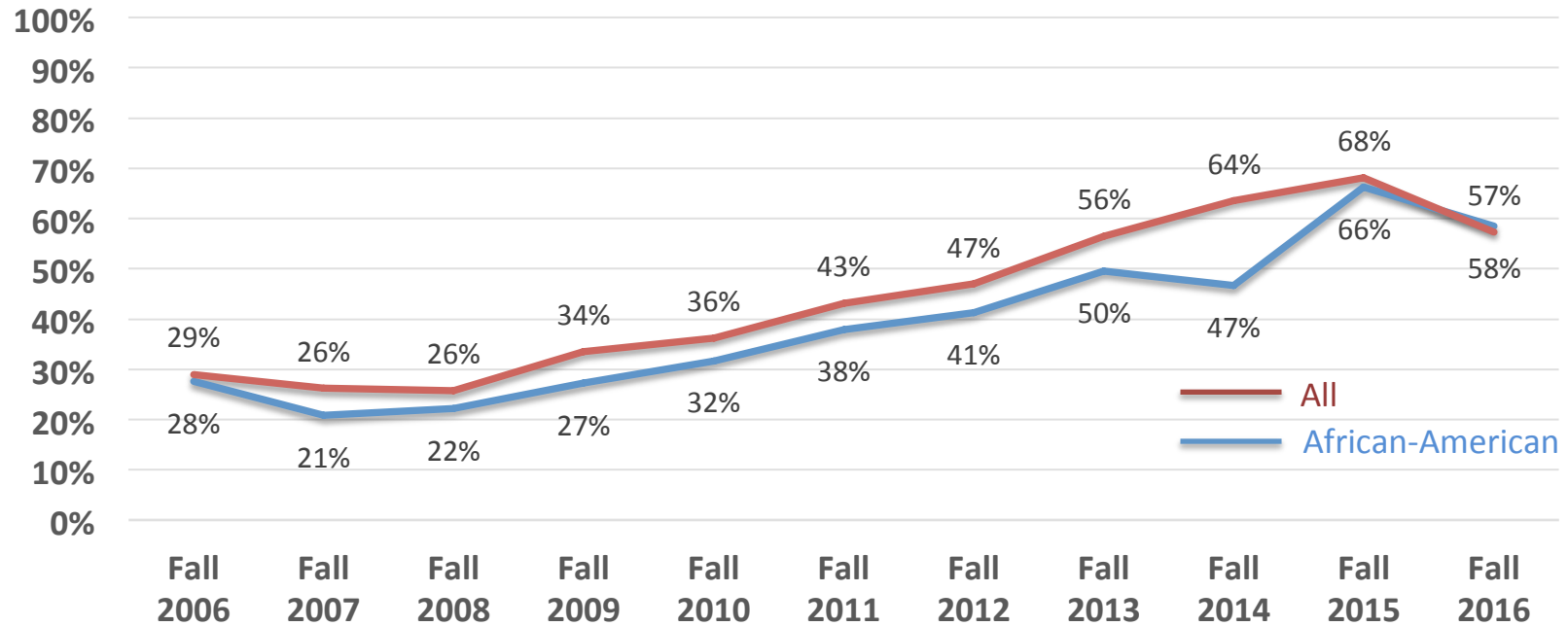


What is the cause of this continuing difference?

- Advising and timing of major declaration?
- Joining learning communities?
- Living off campus?
- Incoming GPAs and ACT scores?
- Academic holds?
- Finances?
- Math competency?

Advising?

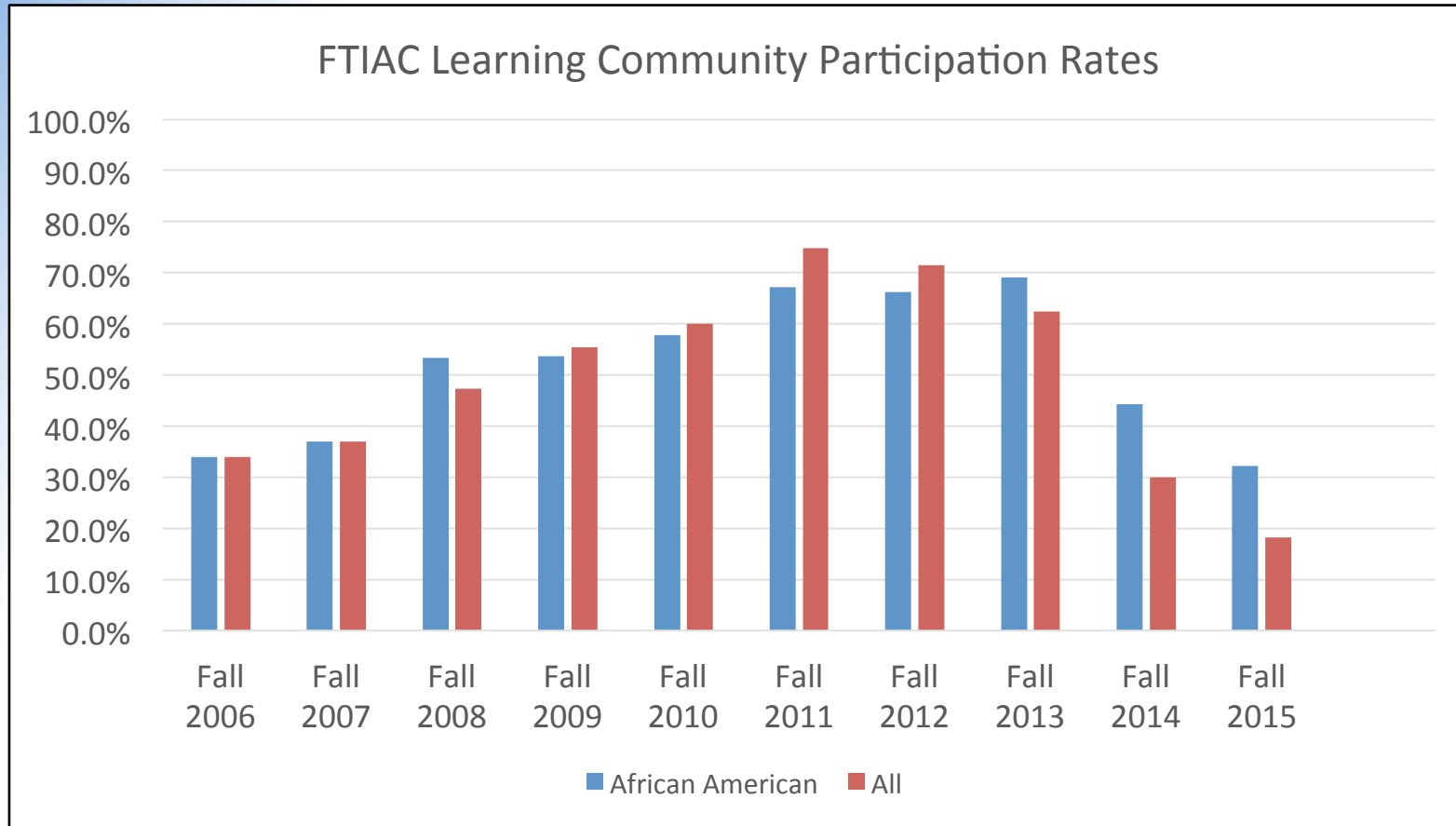
Percent of FTIAC Students Who Declared a Major Within Two Years of Matriculation



What is the cause of this continuing difference?

- ~~Advising and timing of major declaration?~~
- Joining learning communities?
- Living off campus?
- Incoming GPAs and ACT scores?
- Academic holds?
- Finances?
- Math competency?

Learning communities?



What is the cause of this continuing difference?

- ~~Advising and timing of major declaration?~~
- ~~Joining learning communities?~~
- Living off campus?
- Incoming GPAs and ACT scores?
- Academic holds?
- Finances?
- Math competency?

Living off campus?

Percentage of students living on campus

	African American	Other
Fall 2010	53.3%	25.6%
Fall 2011	57.1%	28.8%
Fall 2012	61.1%	34.9%
Fall 2013	53.1%	30.5%
Fall 2014	53.9%	31.7%
Fall 2015	62.4%	33.9%

GPA differences on campus – off campus

	African American		All	
	First year	Second year	First year	Second year
Fall 2010	-0.01	0.00	-0.24	-0.12
Fall 2011	-0.14	-0.08	-0.16	-0.01
Fall 2012	0.00	0.04	-0.08	0.03
Fall 2013	0.19	0.10	-0.05	-0.02
Fall 2014	0.02	-0.23	-0.02	-0.06
Fall 2015	0.02	--	0.02	--

What is the cause of this continuing difference?

- ~~Advising and timing of major declaration?~~
- ~~Joining learning communities?~~
- ~~Living off campus?~~
- Incoming GPAs and ACT scores?
- Academic holds?
- Finances?
- Math competency?

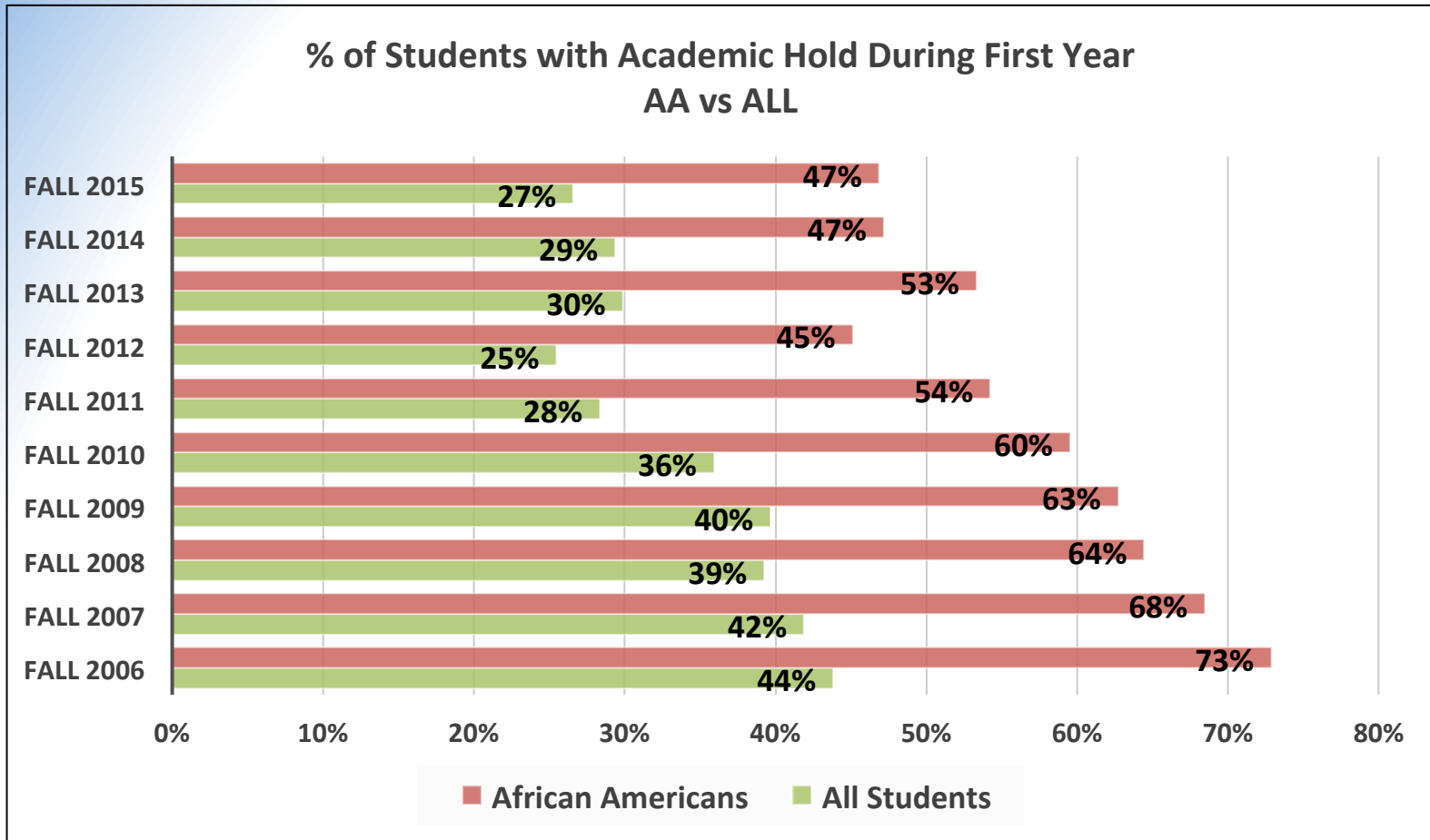
*Differences in average GPA and ACT scores?
2006 through 2016*

	GPA	ACT
All	3.2	21.8
African American	2.9	18.3

What is the cause of this continuing difference?

- ~~Advising and timing of major declaration?~~
- ~~Joining learning communities?~~
- ~~Living off campus?~~
- Incoming GPAs and ACT scores? ✓
- Academic holds?
- Finances?
- Math competency?

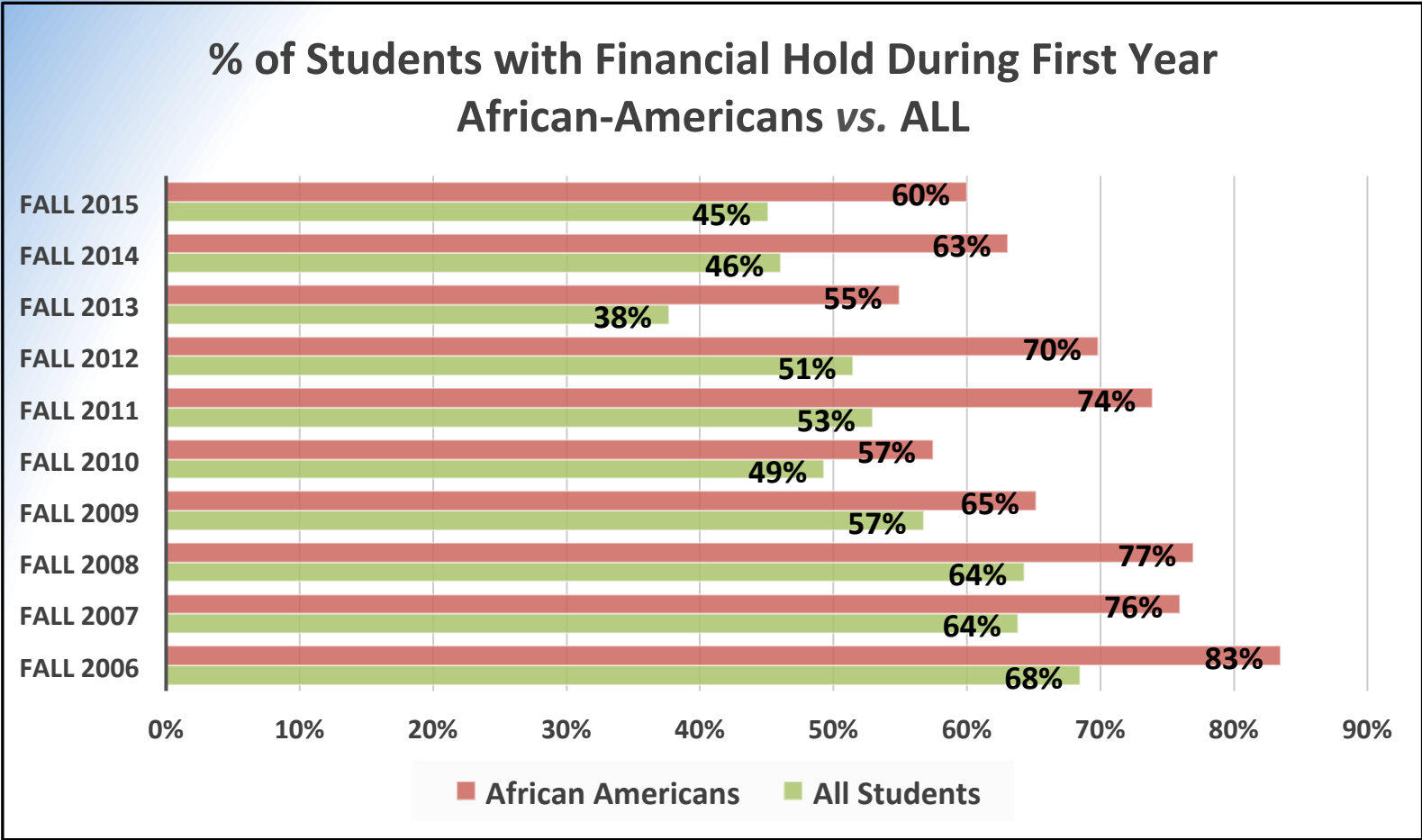
Report from the Education Trust, 2010



What is the cause of this continuing difference?

- ~~Advising and timing of major declaration?~~
- ~~Joining learning communities?~~
- ~~Living off campus?~~
- Incoming GPAs and ACT scores? ✓
- Academic holds? ✓
- Finances?
- Math competency?

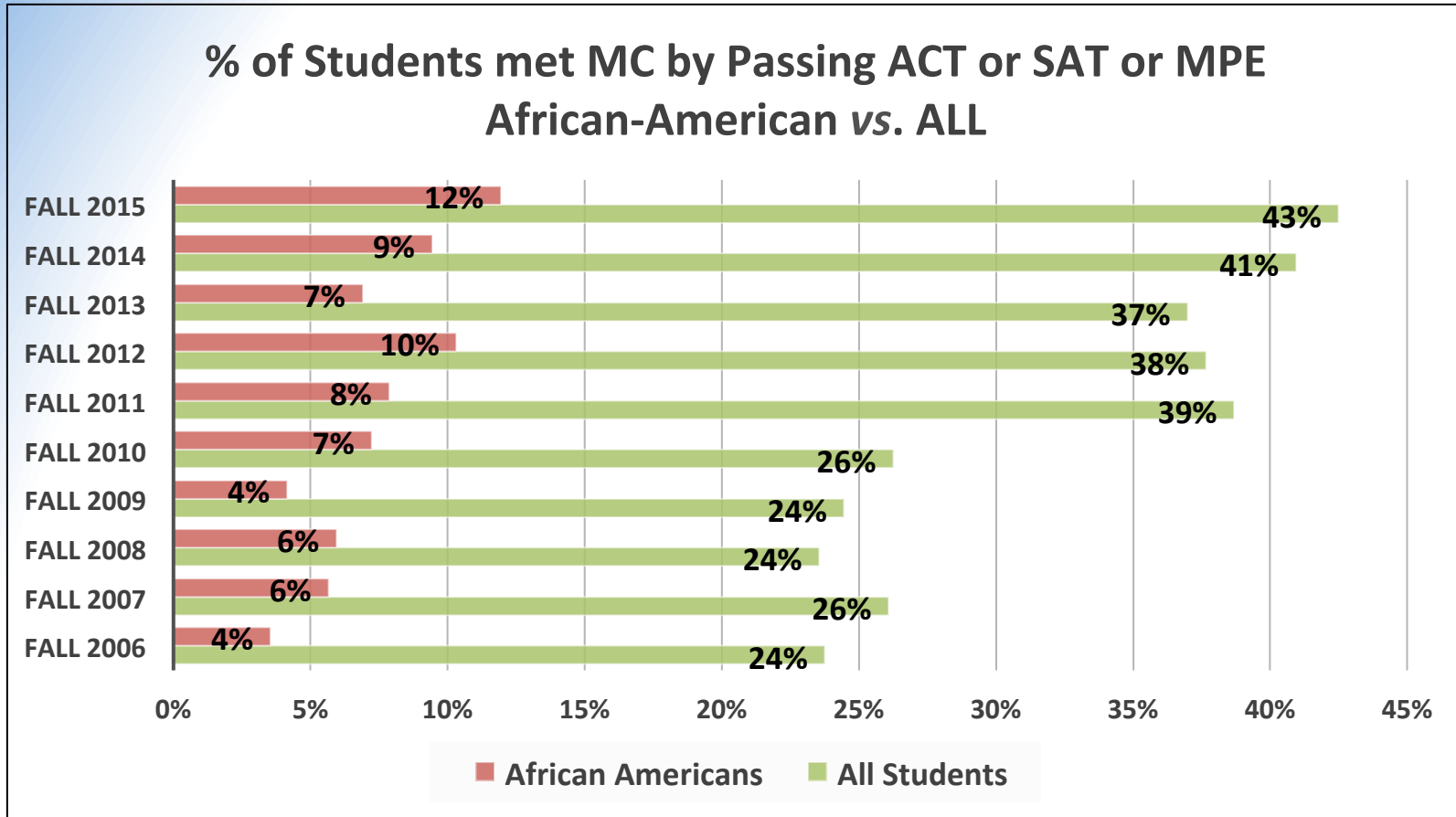
Financial holds?



What is the cause of this continuing difference?

- ~~Advising and timing of major declaration?~~
- ~~Joining learning communities?~~
- ~~Living off campus?~~
- Incoming GPAs and ACT scores? ✓
- Academic holds? ✓
- Finances? ✓
- Math competency?

Math Competency?



What is the cause of this continuing difference?

- ~~Advising and timing of major declaration?~~
- ~~Joining learning communities?~~
- ~~Living off campus?~~
- Incoming GPAs and ACT scores? ✓
- Academic holds? ✓
- Finances? ✓
- Math competency? ✓ ✓

